

## Supplementary file 1

# Chrysosplenetin B suppresses the growth of human prostate cancer cells by inducing G1 cell cycle arrest

Gang He<sup>1,2,\*</sup>, Yanjiao Feng<sup>1#</sup>, Tangcong Chen<sup>1</sup>, Yiyuan Zhang<sup>1</sup>, Li Liang<sup>1</sup>, Jun Yan<sup>1</sup>, Yanxia Song<sup>2</sup>, Fengzheng Chen<sup>3</sup>, Wei Liu<sup>1,4\*</sup>

<sup>1</sup>Key Laboratory of Medicinal and Edible Plants Resources Development of Sichuan Education Department, Sichuan Industrial Institute of Antibiotics, School of Pharmacy, Chengdu University, Chengdu, China

<sup>2</sup>Antibiotics Research and Re-evaluation Key Laboratory of Sichuan Province, Sichuan Industrial Institute of Antibiotics, School of Pharmacy, Chengdu University, Chengdu, China

<sup>3</sup>Sichuan Province Key Laboratory of Natural Products and Small Molecule Synthesis, Leshan Normal University, Leshan, China

<sup>4</sup>School of Life Science, Leshan Normal University, Leshan, China

#These authors contributed equally to this work.

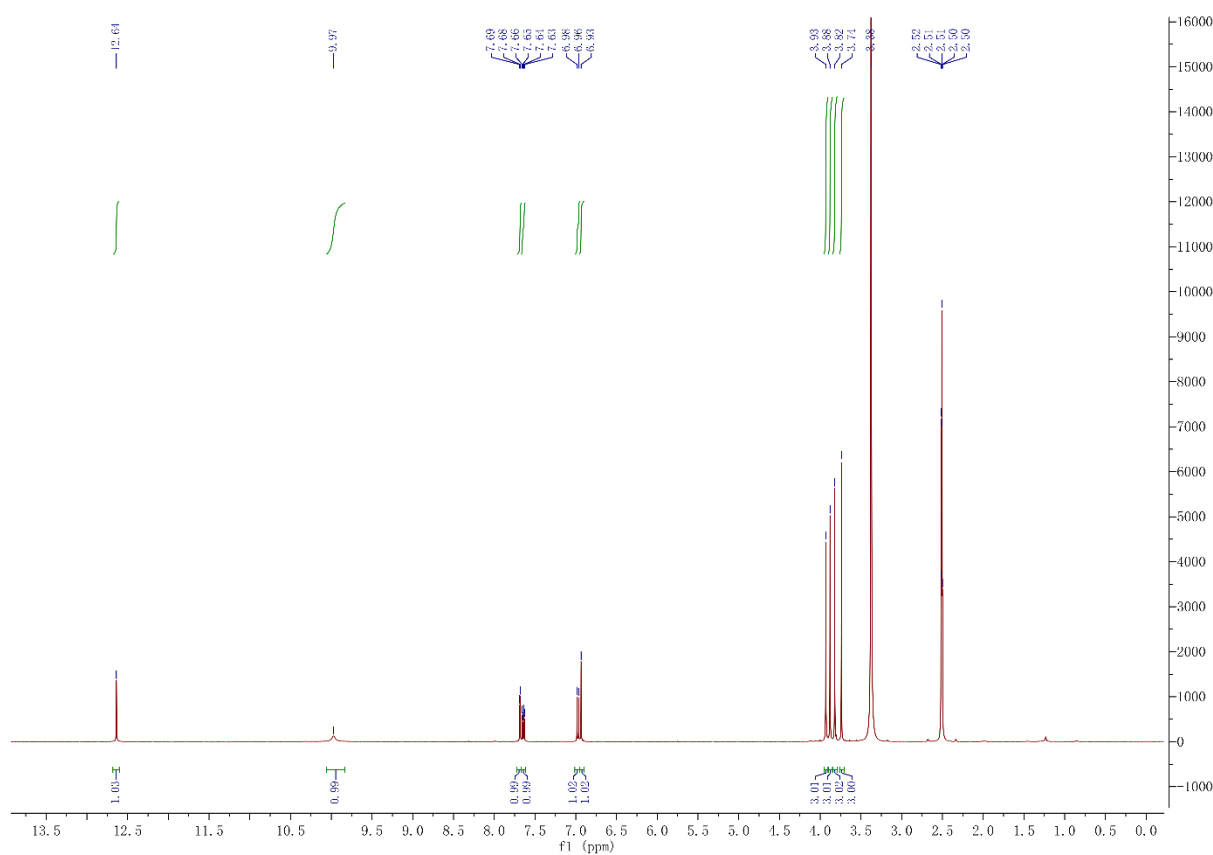


Figure S1. NMR spectra of <sup>1</sup>H of chrysosplenetin B.

chenfengzheng  
JYYS

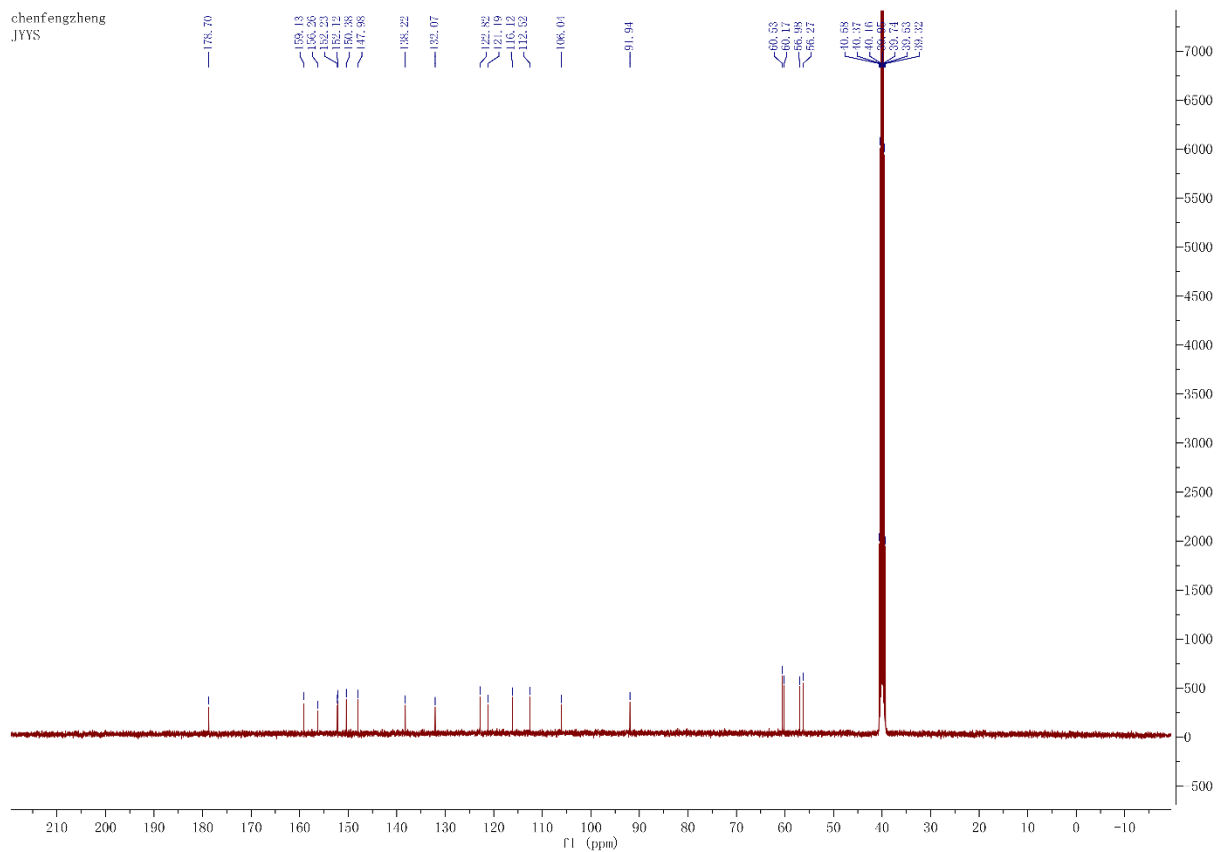


Figure S2. NMR spectra of C<sub>13</sub> of chrysosplenetin B.