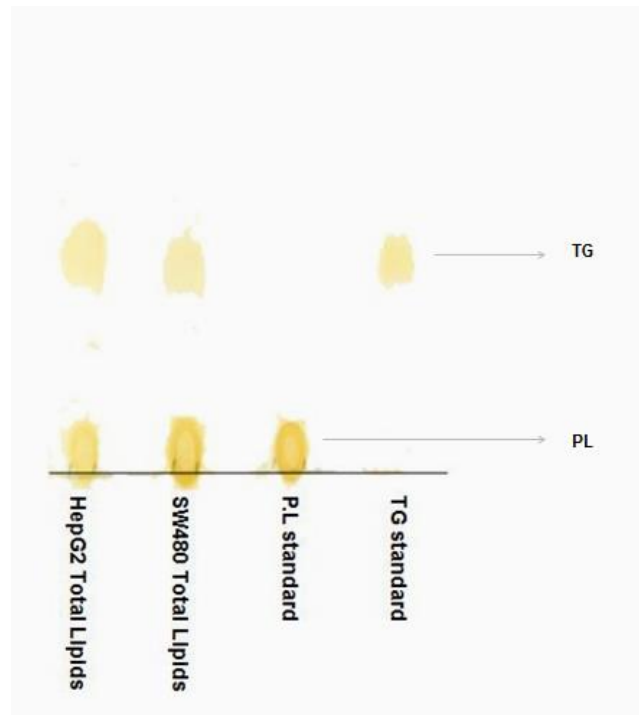
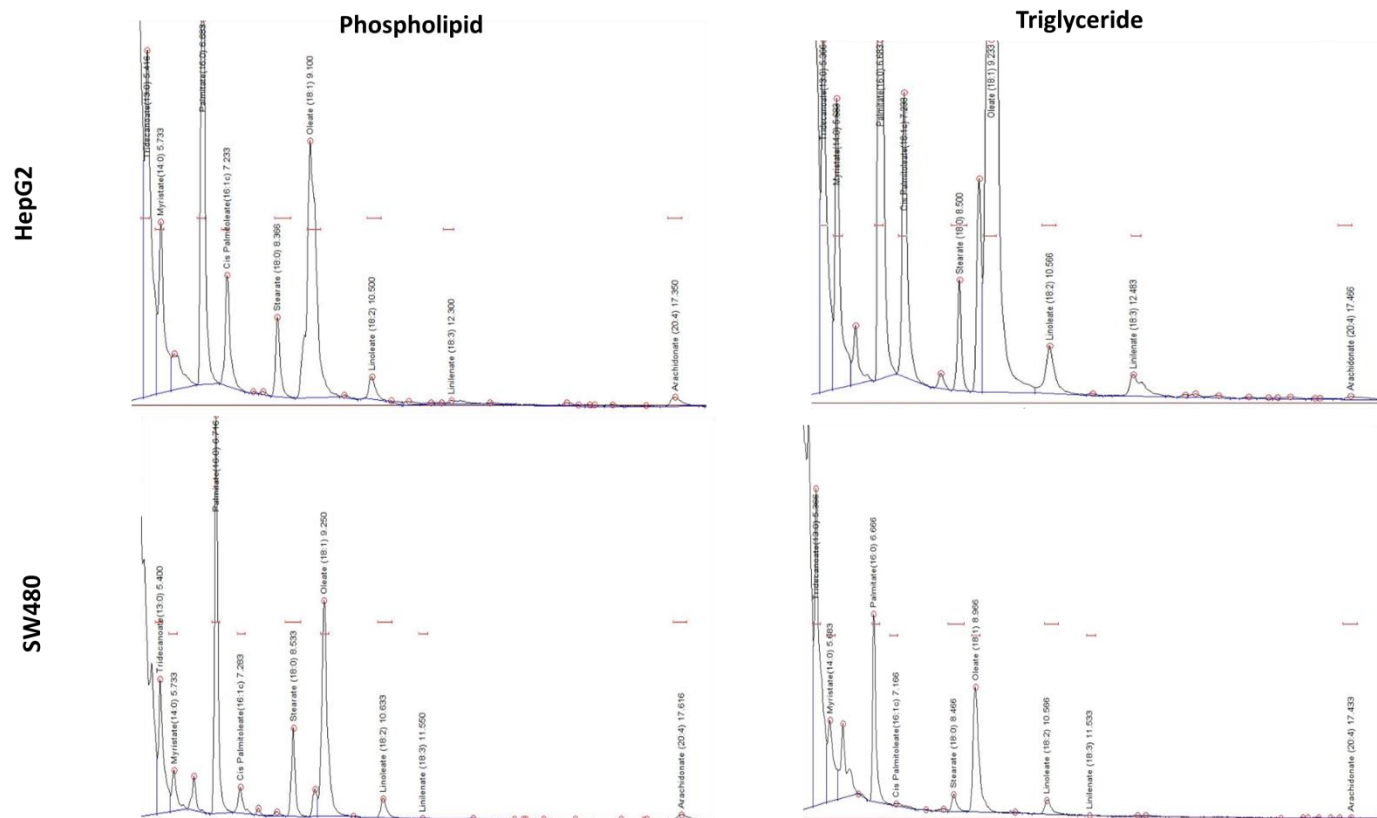


## Supplementary data

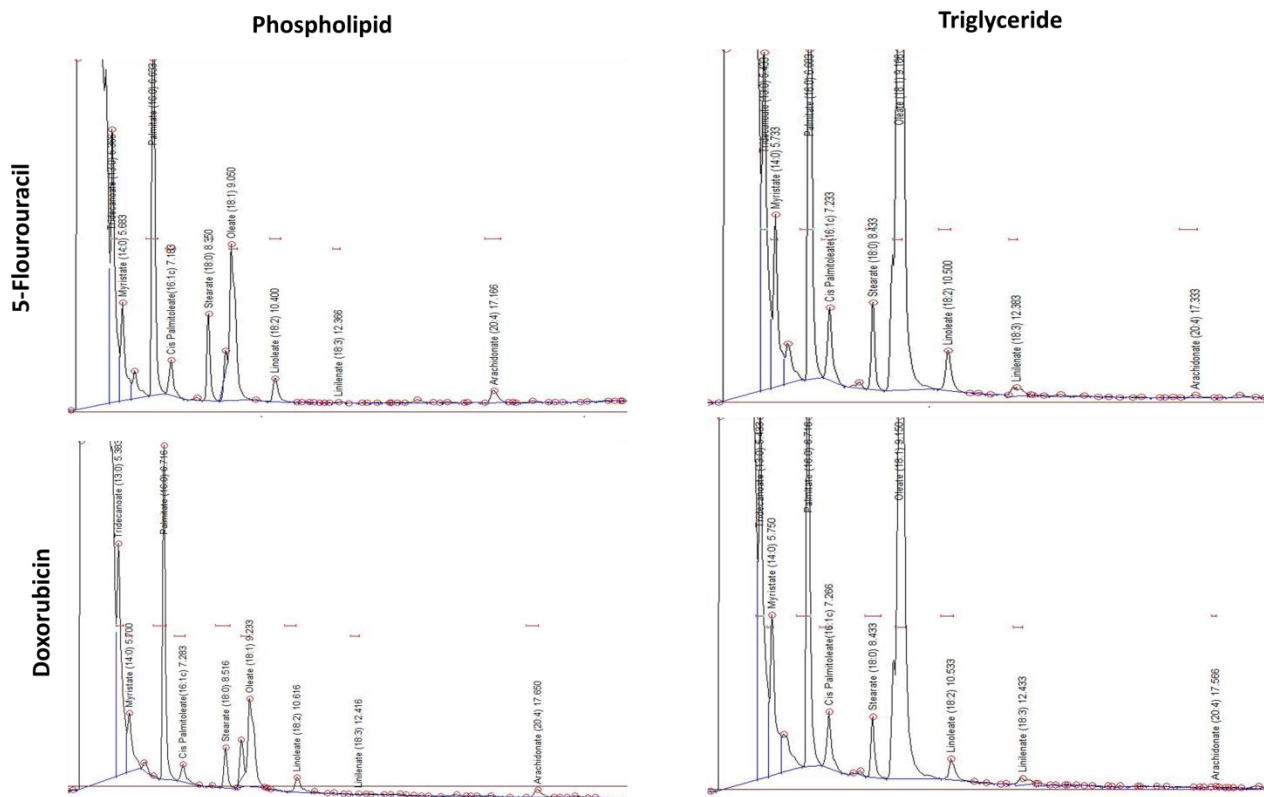


**Fig. S1.** Fractionation of phospholipid (PL) and triglycerides (TG) from HepG2 and SW480 total lipid extracts by thin layer chromatography technique. TLC plates were placed in a TLC tank containing a mobile phase (hexane/diethyl ether/acetic acid) for 90 minutes and targeted fractions were visualized by iodine crystals. Identified fractions are labeled according to the standards rate of flow.



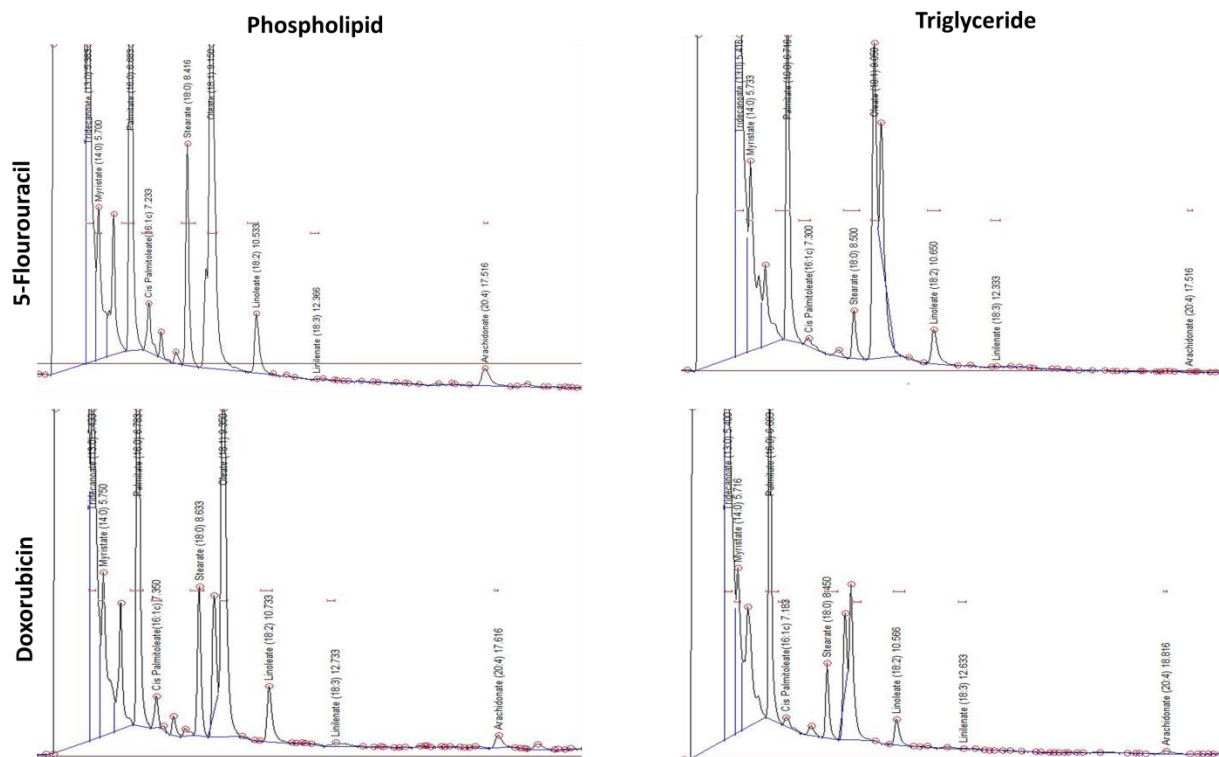
**Fig. S2.** Representative gas-liquid chromatograms of fatty acids from phospholipid (PL) and triglyceride (TG) fractions from HepG2 and SW480 cells.

# HepG2 Cell line



**Fig. S3.** Representative gas-liquid chromatograms of fatty acids from phospholipid (PL) and triglyceride (TG) fractions from 5-FU and/or dox treated HepG2 cells.

# SW480 Cell line



**Fig. S4.** Representative gas-liquid chromatograms of fatty acids from phospholipid (PL) and triglyceride (TG) fractions from 5-FU and/or dox treated SW480 cells.